

1

2

3

4

5

6

A

A

B

B

C

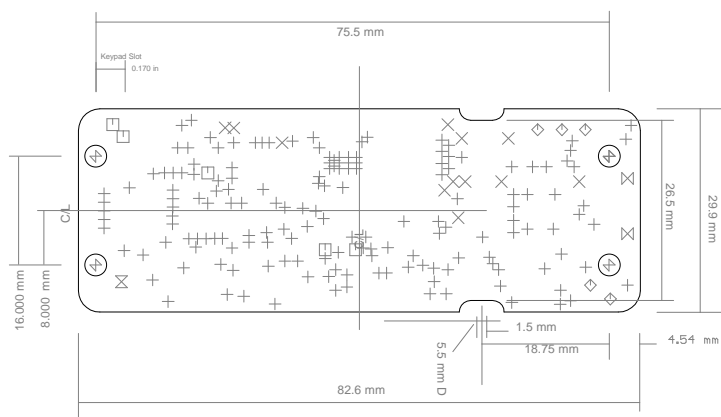
C

D

D

E

E



Sym	Nº	Mils	MM	Qty	Plated
+	1	12	0.30	164	YES
×	2	20	0.50	5	YES
□	3	24	0.60	12	YES
◇	4	31	0.80	1	YES
⊗	5	47	1.20	5	YES
⊠	6	55	1.40	2	YES
⊕	7	126	3.20	5	BOTH

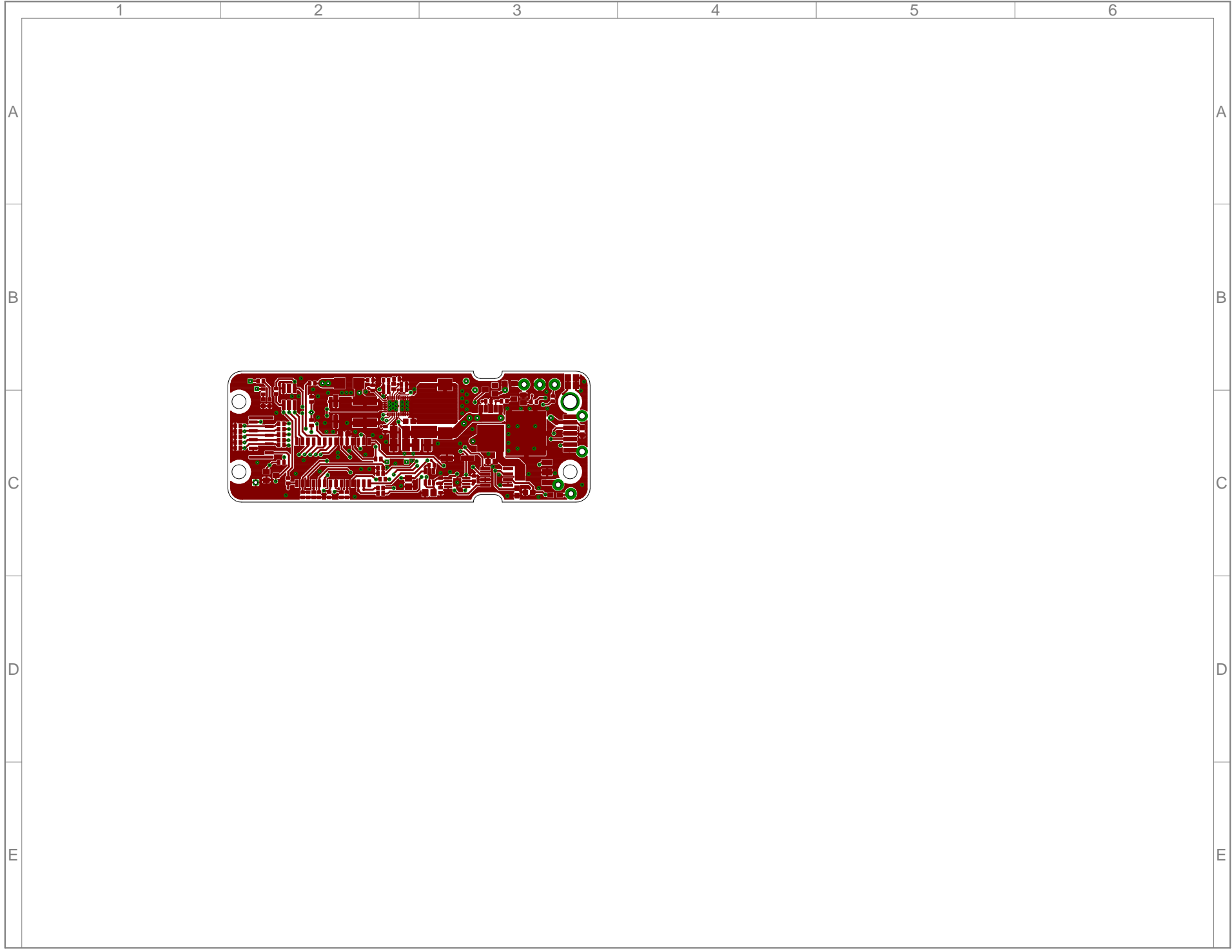
v1.2.2 Notes  
Resize 0.008 vias to 0.012  
Upsize via on high current tracks  
Upsize digital holes  
Resize 0402 pads slightly smaller for manuf  
Turn thermal relief back on  
Add 3rd Output filter cap

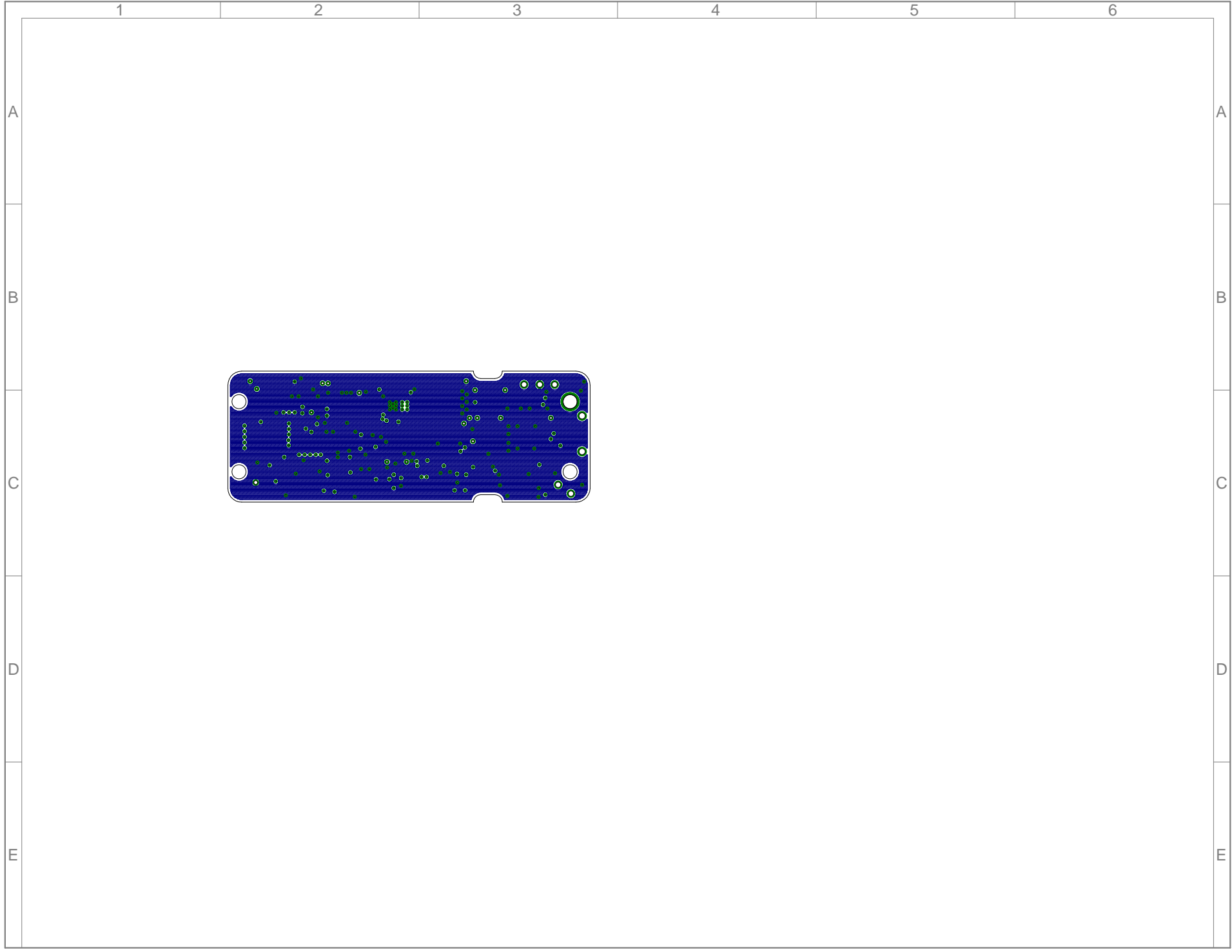
v1.2.3 Notes  
Revise PCB mechanical outline  
Mounting holes and notch change

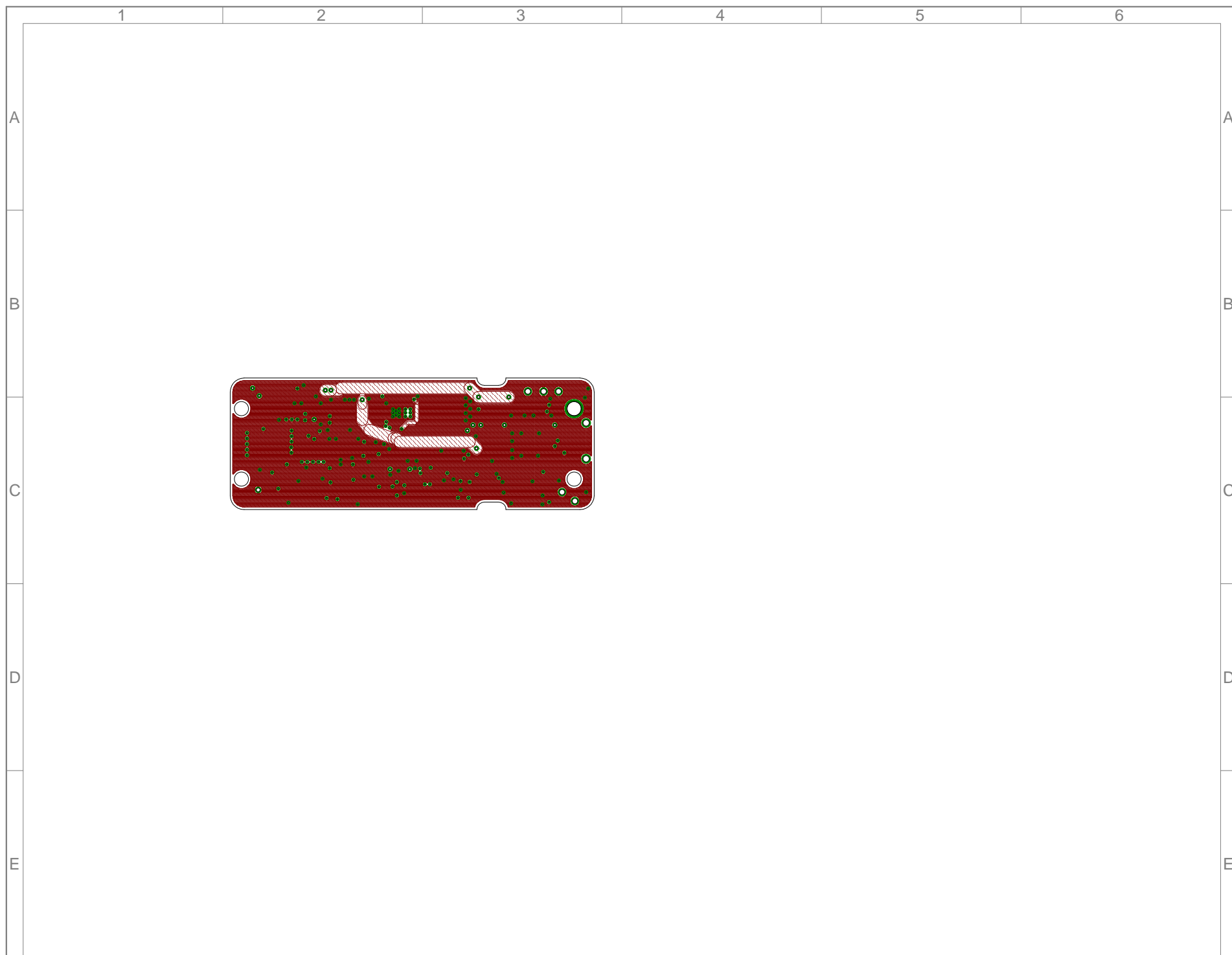
v1.2.4 Notes  
Add Switcher Bypass for Operation below 15v

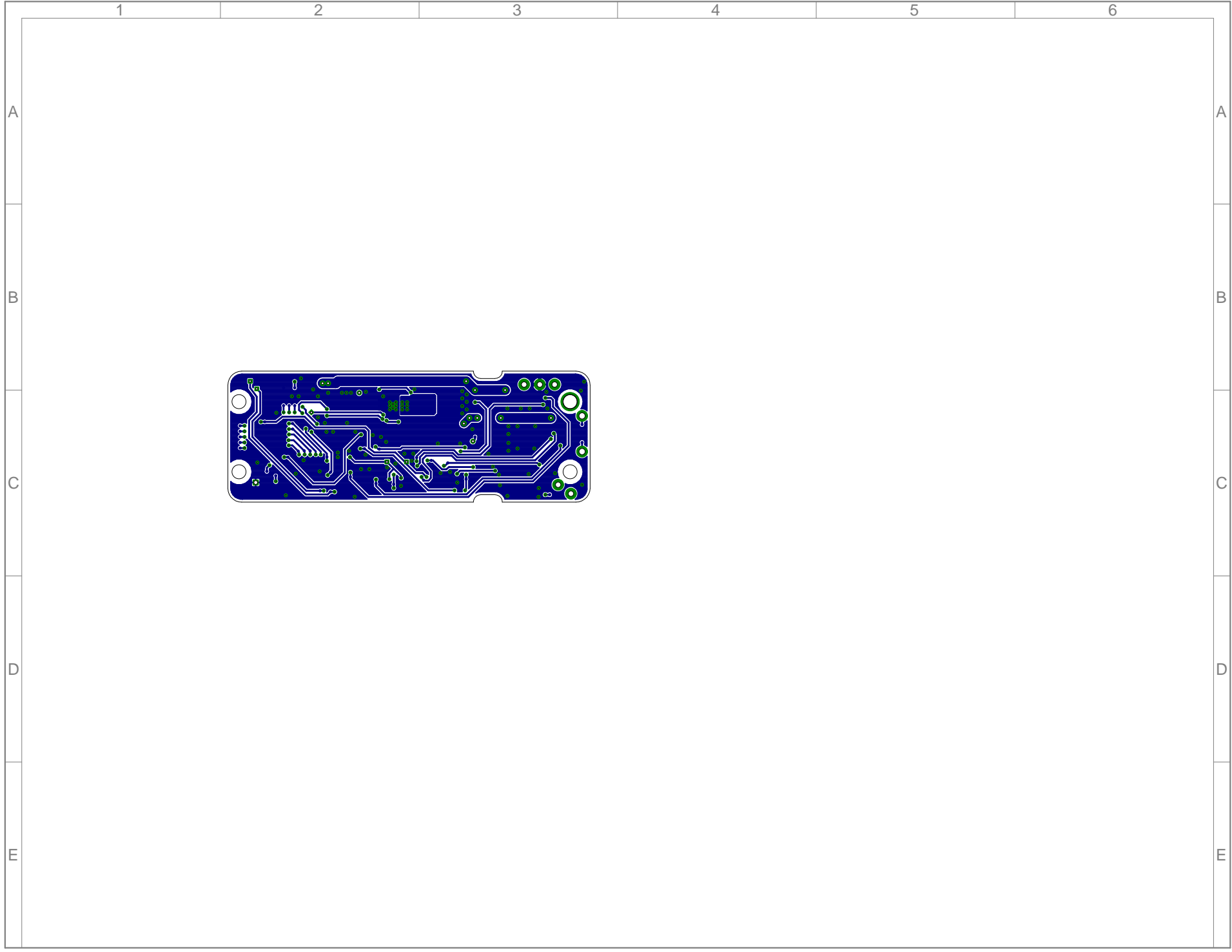
v1.2.5 Notes  
Revised M1A, M1B for 18 Ga wire

v1.3.0 Notes  
Conversion to 4-Layer PCB









	1	2	3	4	5	6
A						
B						
C						
D						
E						

